

VS SERIES TINED WEEDER PRO



**INNOVATIVE SPRING PACKAGE GUARANTEES
OPTIMAL GROUND ADAPTATION**



VS 600 M1 / VS 750 M1 / VS 900 M1 / VS 1200 M1

INNOVATIVE TINE SPRING SYSTEM GUARANTEES OPTIMAL GROUND ADAPTATION

With its unique tine spring system, the VS Tined Weeder Pro perfectly adjusts to the soil and protects the cash crop at the highest level. Tine pressure remains constant at different tine levels. As a result, even crops planted on ridges and mounds, such as the potatoes, can easily be harrowed. The tine pressure remains constant, whether it is on the top or sides of the mounds, or in the furrows. The VS Pro's harrow tines can not only be lifted, but also - as opposed to conventional Tined Weeders - are indirectly spring-loaded to pivot within the frame. The advantage being that the tines can only move up or down and not side to side - a truly unique weed removal experience!

TECHNICAL DATA

	VS 600 M1	VS 750 M1	VS 900 M1	VS 1200 M1
✖ Transport dimensions (folded) ..	H 9' 4"ft	H 11' 8"ft	H 11' 8"ft	H 11' 8"ft
	W 9' 10"ft	W 9' 10"ft	W 9' 10"ft	W 9' 10"ft
	D 7' 10"ft	D 7' 10"ft	D 7' 10"ft	D 7' 10"ft
↗ Working width	19' 7"ft	24' 6"ft	29' 5"ft	39' 4"ft
⚖ Net weight	1,763.11lbs	1,984.3lbs	2,425.1lbs	3,306.15lbs
⊕ Feeler wheels	4 tires	4 tires	4 tires	6 tires
	Dimension: 16.0 / 6 5/8"			
↓ Tines	20,5"			
∅ Tine diameter	0.3"			
→ Tine spacing	1.4"			
🔧 Mounting category	CAT 2 and CAT 2N			
🚜 Tractor performance	37 kW / 50 HP	44 kW / 60 HP	55 kW / 75 HP	66 kW / 90 HP

Requires a double-acting control unit for folding
 Requires a double-acting control unit for the central tine pre-load

ITEMS INCLUDED

- Entire machine with
 - 178 tines (VS 600 M1)
 - 218 tines (VS 750 M1)
 - 266 tines (VS 900 M1)
 - 350 tines (VS 1200 M1)
- Tines are arranged in 6 rows
- Hydraulic tine adjustment
- One set of springs per tine
- 2 parking supports
- 4 set or 6 set feeler wheels





BENEFITS OF THE VS PRO TINED WEEDER

PRECISE

- Sophisticated tine spring system guarantees identical tine pressure throughout the entire spring span
- Each tine has its own individual spring system
- The tines can be pre-loaded, and tines can also be lifted
- No lateral deflection of the tines even if ground is uneven, has furrows, or if crops are planted on mounds



VERSATILE

- 0.8" longer wear tip in comparison to the competitor's product, resulting in longer life span
- Tine pressure adjustment can be reduced continuously down all the way to zero
- Crops planted on mounds are protected, since the spring unit is mounted above the frame giving a higher passage for cash crops
- Feeler wheels can also be adjusted on the track or the row spacing



EASY TO HANDLE

- Hydraulic tine pressure setting
- Clearly visible scale for setting tine pressure
- Hydraulic folding with series connection of the cylinder
 - when folding the machine, the outer side frames fold up to the inner side frames and then to a 90 degree high position
 - unfolding is done in the reverse order of folding up
- Adjustment handle for feeler wheels integrated in wheel mount



TECHNICAL DETAILS & ACCESSORIES



FUNCTIONAL PRINCIPLE

The tines penetrate the soil while harrowing to a maximum depth of 0.8" - 1.2" to break up and crumble the top soil crust. This ensures better soil aeration and the capillarity is interrupted.

The main focus of harrowing is to reduce weeds before they reach the two leaf stadium of growth. While the tines move over the soil, growing weeds in germination stage will be covered with soil or pulled out and discarded on top of the soil where they wither and die off. This means that approximately 90% of the weeds are decimated.



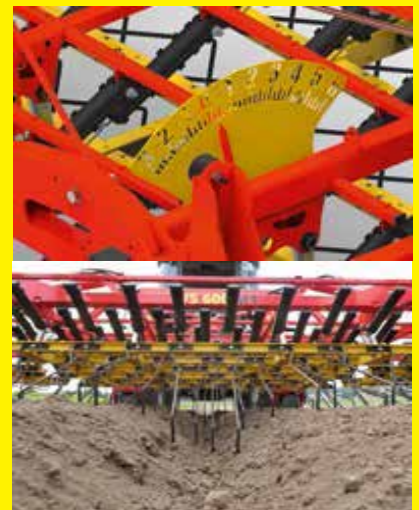
TINE SPRING SYSTEM

With our unique tine spring system, the tines can be lifted and adjusted, so that harrowing is possible even with sensitive crops or in sensitive crop stages. This enlarges the time window, because the tine pressure can be reduced to the tine's net weight and thus no breaks for harrowing are required in sensitive plant stages.



SPECIFICITY OF THE TINES

The tines of the VS Tined Weeder Pro have a 0.8" longer wear tip (compared to the conventional product of competitors), which leads to a longer life span. Another particular benefit is the possibility to choose between conventional spring steel tines or carbide tipped tines. The VS Tined Weeder Pro with 5/16" tines with a 1.4" spacing apply the same tine pressure on the ground even at different tine levels. This enables harrowing of crops planted on mounds such as potatoes. The tine pressure is the same on the top and sides of the mounds, and in the furrow.





BENEFITS COMPARED TO COMPETITION

- The tines can not only be pre-loaded, they can also be lifted
- During transport the tines are facing flat towards the frame thus ensuring a safe road transport as well as stable parking of the machine, because the tines are in a folded up position
- In combination with APV Pneumatic Seeders, a capacity of up to 14.2bu / 17.7 cu ft (PS 120 - PS 500) is possible
- 0.8" longer wear tip
- Tine pressure can be reduced continually down all the way to zero
- Higher passage and protection of the crop, as the spring is mounted above the tine bed



APPLICATION AREAS

- The VS Tines Weeder Pro prolongs the harrow period
- Due to precise adjustments, continuous harrowing (BBCH-stages) is possible
- Crops planted on mounds, such as potatoes, etc.
- Cereal stocks, such as wheat, spelt, rye, oats, etc.
- Soy, corn, turnip, sunflower, rice, etc.
- Special applications such as milk thistle, poppy, peanut, etc.



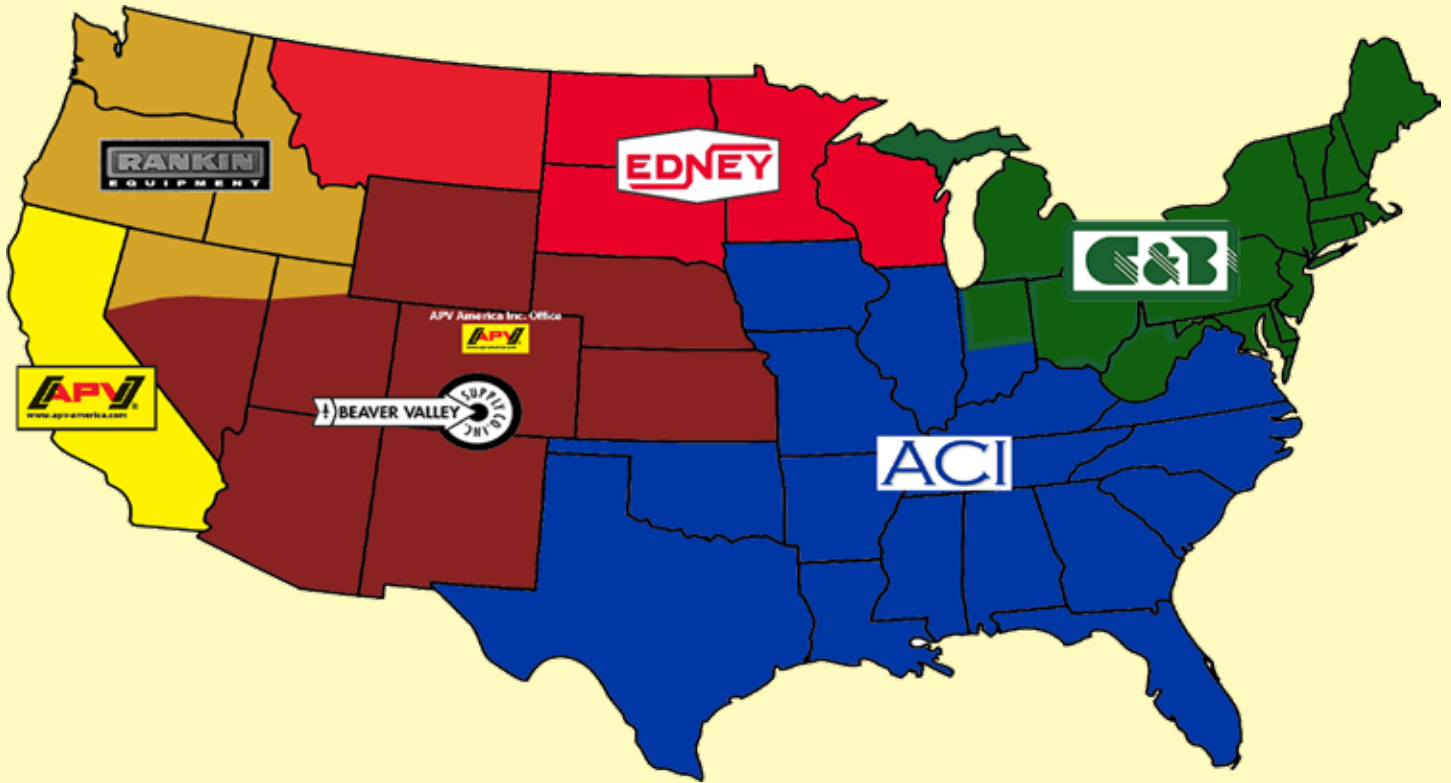
COMBINATON OPTIONS

- Usable with APV Pneumatic Seeders PS 120 M1 - PS 500 M2 with electric or hydraulic fan
- The VS Tined Weeder Pro can also be fitted with carbide tine tips upon request. These are coated at the wear tip (2.4")



ACCESSORIES

- Warning signs + lights
- Access platform
- Mounting kit for PS 120 M1 - PS 500 M2



FIND OUR APV AMERICA INC. PRODUCTS THROUGH OUR CURRENT DISTRIBUTORS



ACI Distributors

3220 New Town Boulevard
 Saint Charles, MO 63301
www.acidist.com
 (800) 237-0562



Cummings & Bricker, Inc.

PO Box 928
 100-120 Lehigh Avenue
 Batavia, NY 14020
www.cummingsandbricker.com
 (800) 222-8969
 100 Stover Drive
 Carlisle, PA 17015
 717-249-6720



Edney Distributing Co., Inc.

8485 215th Street West
 Lakeville, MN 55044
www.edneyco.com
 (888) 443-3639



Beaver Valley Supply Co.

P.O. Box 419, Atwood, KS 67730
www.beavervalley.com
 (800) 982-1280
 9591 Northfield Blvd, Denver, CO 80238
 800-528-2872



Rankin Equipment Co.

P.O. Box 168
 Yakima, WA 98907
www.rankinequipment.com
 (800) 426-2009

FOLLOW APV AMERICA INC. ON SOCIAL MEDIA!



www.facebook.com/APVAmerica
www.youtube.com (search "APV America")
twitter.com/APVAmerica



www.apv-america.com

Information is provided without guarantee; APV America Inc. is not responsible for errors and omissions. All images are representative.