

with the Yield Monitoring Plugin Quick Reference Card

RUN SCREEN LAYOUT



CONFIGURING THE YIELD MONITORING PLUGIN ON THE FmX DISPLAY

Notes:

For information on setting up the Yield Monitoring plugin, see the AgGPS FmX Integrated Display User Guide.

If you have any questions regarding settings, tap the **Tips** button or refer to the AgGPS FmX Integrated Display User Guide.

Setting up the Implement

Before starting the Yield Monitor setup on the FmX® integrated display, ensure that:

- All cables of the system are installed on the vehicle.
- The Yield Monitor plugin has been added to the FmX integrated display configuration.

To make sure that the Yield Monitor plugin has been added:

1. On the Home screen, tap the Run icon.
2. In the *Configuration Selection* screen, tap the **Edit** button next to *Implement*.
3. In the *Configuration* screen make sure that the Yield Monitor icon appears. If the icon does not appear, tap **Add/Remove** to add the plugin to the configuration.

Setting General values

1. In the *Configuration* screen, select *Yield Monitoring* and then tap **Setup**. The *Yield Monitoring Configuration* screen opens at the General tab:

2. Enter the required values for each field.
3. Tap **OK**.

Setting Crop Values

1. Tap the *Crop* tab:

2. Do one or more of the following:
 - Set the *Crop Type*: This setting controls the selection of a crop type.
 - Set the *Standard Moisture*.
 - Set *Bushel Weight*.
3. Tap **OK**.

Setting up the Theme Values

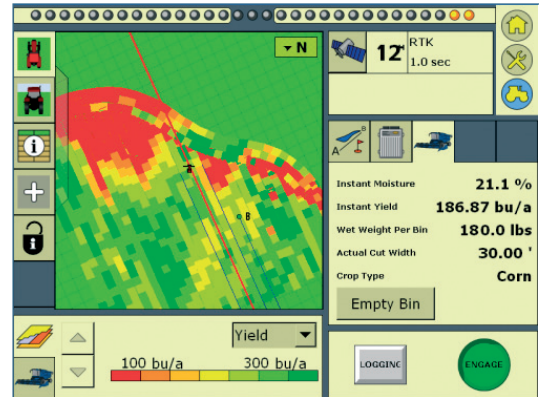
1. Tap the *Theme* tab.
2. Enter the required values for each field.
3. Tap **OK**.

Note: Ensure that the correct crop type is selected on the John Deere display and that the sensors are calibrated.

Yield Monitor Operation

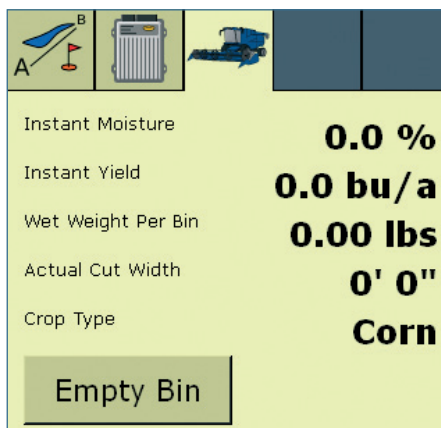
Run screen

The following status items may appear on the Yield Monitoring Run screen:



Screen item	Displays ...
Instant yield	The dry yield in bushels per acre. If you are harvesting, the instantaneous yield is displayed and will change every second. If you are not harvesting, the average yield appears.
Grain flow	The dry bushels per hour you are harvesting.
Average yield (per bin and per field)	The average dry yield in bushels per acre.
Instant moisture	The instantaneous grain moisture if you are harvesting. If you are not harvesting the average grain moisture is displayed. You can select this in a manual moisture mode.
Field moisture (per field)	The average grain moisture.
Wet weight (per bin and per field)	The estimated wet weight in pounds of grain.
Header height	A number to indicate the position of the head. This number is not in feet or inches, but is a number that is relative to the height of the head.
Bin moisture	The dry weight (bin and field).

Plugin tab



Click the **Empty Bin** button to clear the wet bin weight. The *Actual Cut Width* field applies to both auto and manual.

Map layers

User-defined minimum and maximum levels with seven ranges:

- Yield
- Moisture

Yield Monitor status buttons - Autocut width

Autocut width detection automatically reduces the cut width as entering point rows and other previously harvested areas for accurate area calculations. If you are harvesting a row crop with pre-configured rows then the width reduces on an overlap by one row at a time.

The yield monitor buttons at the bottom of the map screen allow you to manually reduce the cut width; each button reduces the cut width by one sixth of the head width. This is useful for areas with no crops, or areas where another combine may have harvested.



- If you tap a button, harvesting and logging works as usual.
A green icon appears on the button when harvesting.
- If you tap the sections/row. A red icon appears on the button. You will see the map with a reduced swath area by an amount (1/6th per button).

- A gray icon appears on the button turns when the active rows overlap previously harvested areas.
- There is no change to the buttons when logging is disabled.

Information screen

The following status items can be added on the Information screen:



Screen item	Displays ...
Average yield (per bin and per field)	The average dry yield in bushels per acre.
Bin moisture	The average grain moisture of the bin.
Dry weight (per bin and per field)	The amount of crop harvested in metric tonnes, pounds, or imperial tons of grain.
Field moisture	The average grain moisture.
Grain flow	The dry bushels per hour you are harvesting.
Header height	A number to indicate the position of the head. This number is not in feet or inches, but is a number that is relative to the height of the header.
Instant moisture	The instantaneous grain moisture if you are harvesting. If you are not harvesting the average grain moisture is displayed. You can also select this in a manual moisture mode.

with the Yield Monitoring Plugin Quick Reference Card

Screen item	Displays ...
Instant yield	The dry yield in bushels per acre. If you are harvesting, the instantaneous yield is displayed and will change every second. If you are not harvesting the average yield is displayed.
Wet weight (per bin and per field)	Displays the estimated wet weight in metric tonnes, pounds, or imperial tons of grain.



P/N 93020-81-E03

© 2009–2010. Trimble Navigation Limited. All rights reserved. Trimble, the Globe and Triangle logo, AgGPS, and FmX are trademarks of Trimble Navigation Limited, registered in the United States and in other countries. Version 3.00, Rev A (February 2010).