

The EZ-Guide 500 CFFE Name Creation Utility

Introduction

The EZ-Guide[®] 500 CFFE Name Creation utility from Trimble enables you to create a list of client, farm, field, and event (CFFE) names on an office computer or laptop and then load the list onto your EZ-Guide 500 lightbar through the USB drive. You can then select these names from the existing names list, rather than entering them with the virtual keyboard.

You can:

- Enter up to 20 Client, Farm, and Event names
- Enter up to 60 Field names
- Create new configuration files
- Load existing configuration files and then edit them

Note: You can have multiple CFFE names files on your office computer or laptop and then select the appropriate one when required.

Installing the Name Creation utility

The EZ-Guide 500 Name Creation utility is located on www.EZ-Guide.com under *Support / EZ-Guide 500 Support / Downloads*. Follow the instructions below to download and install the utility on your computer:

1. Transfer the zip file from www.EZ-Guide.com to your computer.
2. Extract the file *setup.exe* to a temporary folder (or a folder you specify).
3. Double-click the file *setup.exe*. The EZ-Guide 500 CFFE Name Creation utility installs and runs. During the installation, you can choose to create a desktop shortcut and quickstart icon.

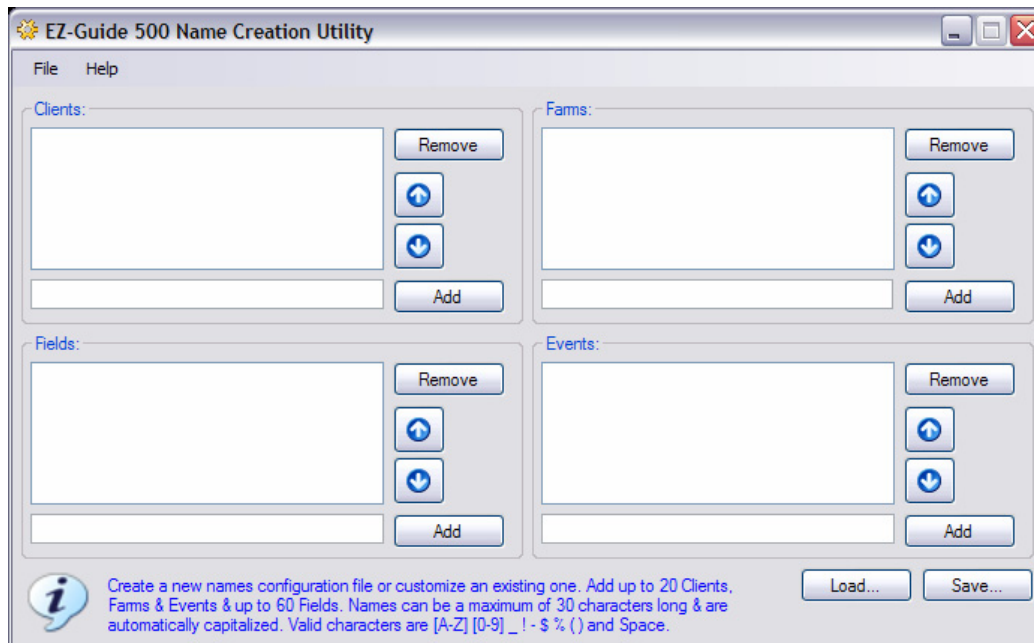
Note: The Name Creation utility requires the Microsoft[®] .NET framework v2.0 or later to run. If the .NET framework is not installed on your computer, download it from <http://www.microsoft.com/downloads/details.aspx?FamilyID=0856each-4362-4b0d-8edd-aab15c5e04f5&displaylang=en>

Using the Name Creation utility

To start the configuration tool, do one of the following:

- Select *Start / Programs / EZ-Guide 500 Name Creation Utility / EZ-Guide 500 Name Creation Utility*.
- Double-click the EZ-Guide 500 Name Creation utility shortcut that was created on the computer desktop during the installation.
- Click on the EZ-Guide 500 Name Creation utility quickstart icon that was created during the installation.

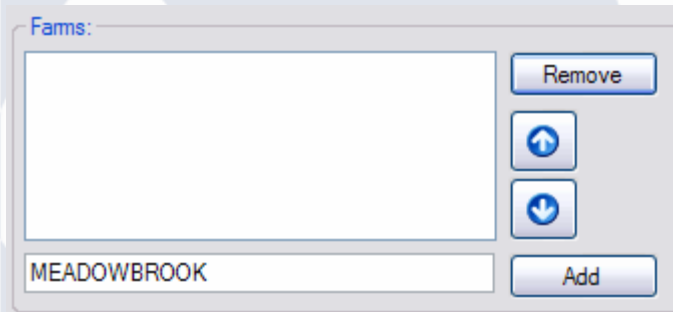
The *EZ-Guide 500 Name Creation Utility* screen appears:



Entering a client, farm, field, or event name

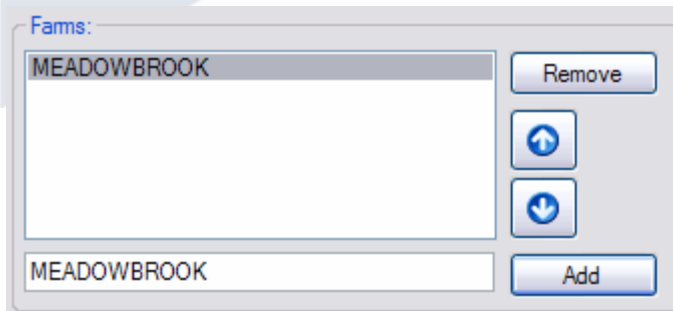
Enter the new name in the text box in the appropriate group. For example, to add the name “Meadowbrook” to the list of Farm names:

1. Enter **Meadowbrook** in the text box in the Farms group:



Note: The maximum number of characters for a name is 30. All letters are automatically capitalized. Valid characters are [A-Z] [0-9] _ ! - \$ % () and Space.

2. Click **Add** or press **Enter**. “Meadowbrook” appears in the list of farm names:





Removing a name from the list

1. Select the name from the list.
2. Click the appropriate **Remove** button.

Changing the order of the list

1. Select the name to move.

2. Press the  or  button to move the item up or down the list.

Saving the list when complete

1. Once you add the names you require, click **Save** to save the configuration.
2. Enter a new name to save the file separately, or enter an existing file name to save over the existing file.

Note: When you are prompted for a name for your configuration, enter a name that describes the configuration. The name creation utility adds “_ezg_profile.cfg” to the name you entered, so the EZ-Guide 500 system recognizes the file as a valid configuration file. If the file name does not end in “_ezg_profile.cfg”, the EZ-Guide 500 system will not upload it.

Loading an existing list

- To open an existing names configuration file, click **Load** and then select the file.

Loading the file to the lightbar

1. Copy the configuration file from your computer to a USB drive.
2. Insert the USB drive into the lightbar.

The configuration file is copied onto the lightbar.

Closing the Name Creation utility

Do one of the following:

- From the *File* menu, select Exit.
- Click the **X** in the top right of the screen.

Trademark information

© 2007, Trimble Navigation Limited. All rights reserved. Trimble, the Globe & Triangle logo, and EZ-Guide are trademarks of Trimble Navigation Limited, registered in the United States and in other countries. Microsoft is a registered trademark of Microsoft Corporation in the United States and/or other countries. All other trademarks are the property of their respective owners.